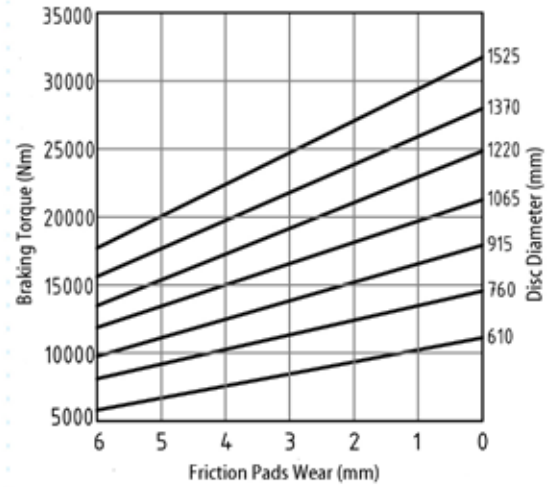
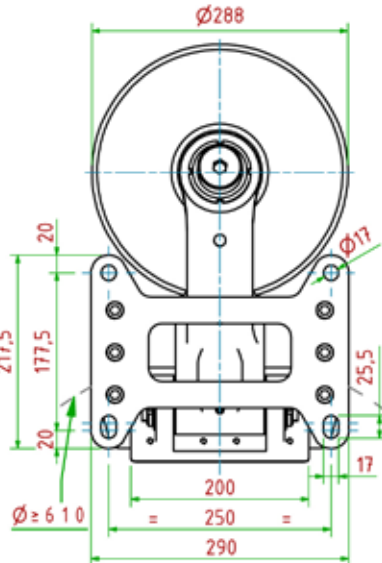
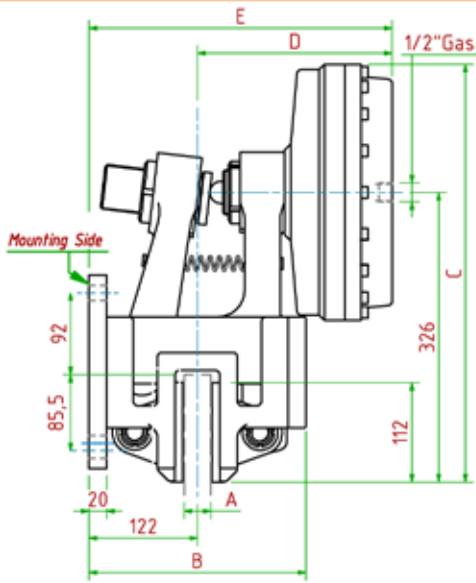


Caliper Brake

Pneumatically Released



CBS 102



Release Pressure: Pa = 6bar

Max Cylinder Volume: 1000cm³

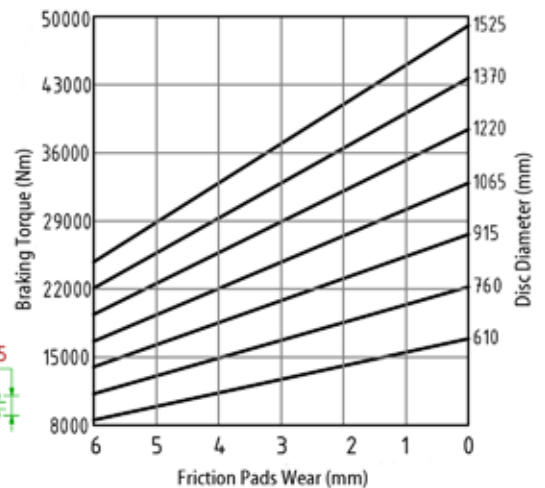
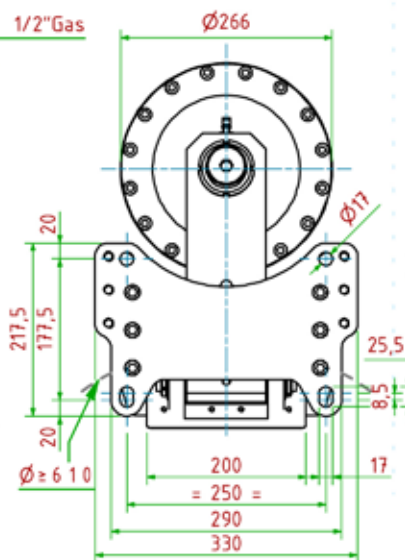
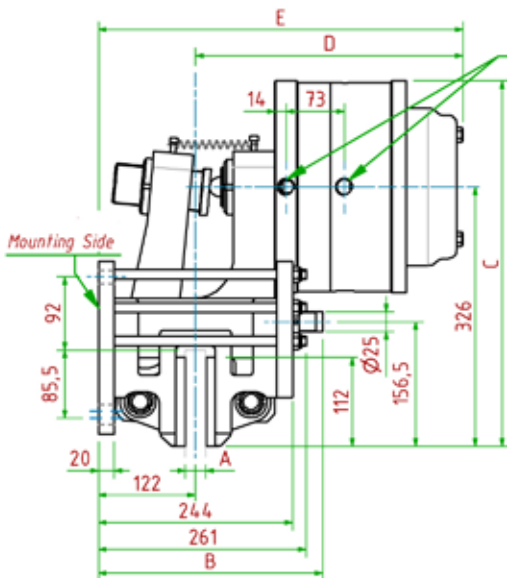
Braking Torque: Md = [Ftx(Φ(m)/2-0.065(m))] **Warning: Initial Braking Torque can be reduced by 30%-50%**

Maximum total wear of pads = 12mm

MODEL	CODE	A	B	C	D Max	E Max	Braking Force	Weight
CBS 102/25	051120301	25.4	244	470	219	341	Ft = 45500N	79.1kg
CBS 102/30	051120302	30	244	470	219	341	Ft = 45500N	79.1kg
CBS 102/40	051120303	40	244	470	224	346	Ft = 45500N	79.1kg



CBS 103



Release Pressure: Pa = 6bar

Max Cylinder Volume: 1662cm³

Braking Torque: Md = [Ftx(Φ(m)/2-0.065(m))] **Warning: Initial Braking Torque can be reduced by 30%-50%**

Maximum total wear of pads = 12mm

MODEL	CODE	A	B	C	D Max	E Max	Braking Force	Weight
CBS 103/25	051103301	25.4	282	459	336	458	Ft = 70500N	123kg
CBS 103/30	051103302	30	282	459	336	458	Ft = 70500N	123kg
CBS 103/40	051103303	40	287	459	341	463	Ft = 70500N	123kg

