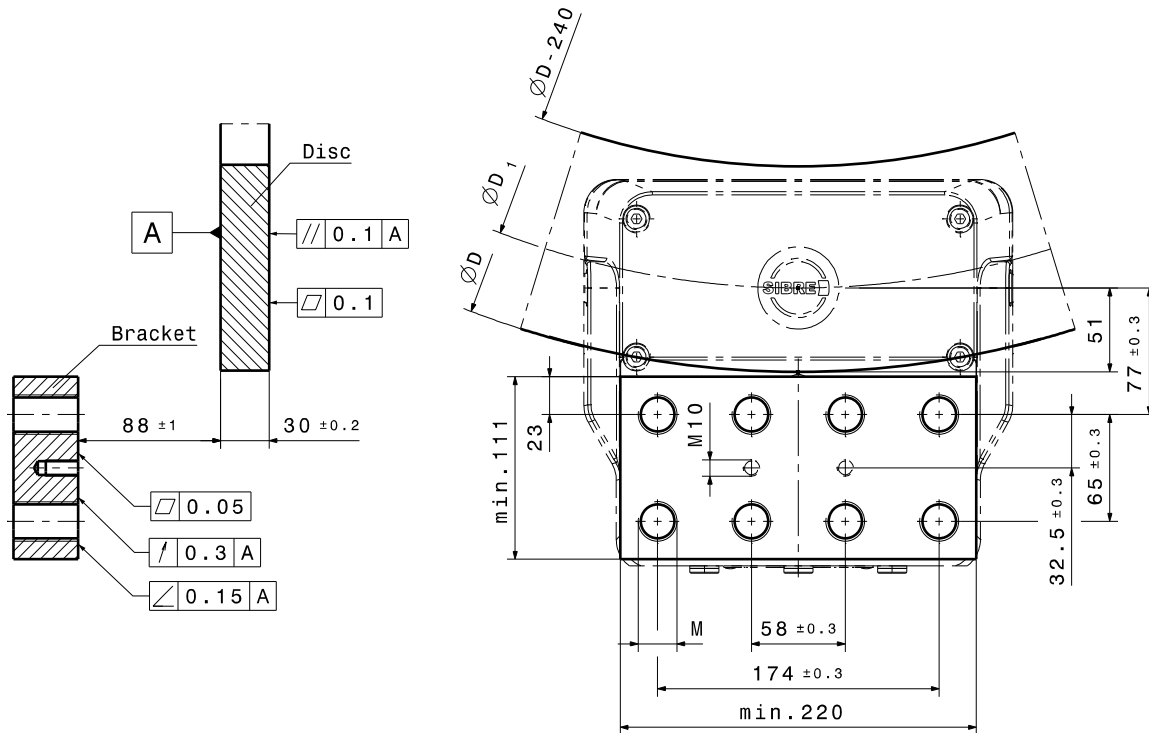


Example for mounting (b = 30)

	ABT 75 G R	ABT 90 G R
Mounting bolts M	M24-12.9	M27-12.9
Torque ($\mu = 0,14$)	1200 Nm	1800 Nm



Calculation of Braking Torque

$$D_1 = D - 102$$

$$M_{Br} = F_{Br} \cdot \frac{D_1}{2} = 2 \cdot A_p \cdot p \cdot \mu \cdot \frac{D_1}{2} = 2 \cdot A_p \cdot p \cdot \mu \cdot \left(\frac{D}{2} - 51 \right)$$